

# Pharmacognostic Study of Sangkareho Root (*Callicarpa longifolia* Lam.) from Pelaihari, South Kalimantan

*by* Fitriyanti Fitriyanti

---

**Submission date:** 20-Feb-2023 08:32PM (UTC-0800)

**Submission ID:** 2019361096

**File name:** 3.\_jurnal\_BJOP\_UMPalangkaraya\_Mei\_2020.pdf (269.81K)

**Word count:** 2781

**Character count:** 15326

## Pharmacognostic Study of Sangkareho Root (*Callicarpa longifolia* Lam.) from Pelaihari, South Kalimantan

Fitriyanti<sup>1</sup>

Yusmalina

Rahmi Muthia<sup>2</sup>

6

Department of Pharmacy, Sekolah  
Tinggi Ilmu Kesehatan Borneo Lestari,  
Banjarbaru, South Kalimantan,  
Indonesia

\*email: fitriyantihudari@gmail.com

**Keywords:***Callicarpa longifolia* Lam  
Pharmacognostic  
Thin-layer chromatography**Abstract**

Sangkareho (*Callicarpa longifolia* Lam.) is used traditionally by one of Kalimantan's indigenous tribes, the Dayak Tunjung tribe as a medicine for colds and inflammation, where the plant parts used are the roots. Considering its very potential prospects, research aimed at providing a scientific basis for plant pharmacognostic data needs to be carried out with qualitative methods. The qualitative examination is done by several methods including test identification of organoleptic, macroscopic, microscopic, and chemical compounds. Organoleptic test results showed that the roots have a light brown color, bitter and slightly spicy, and a rather pungent odor. Microscopic test results showed sangkareho root has a length of  $\pm 90$  cm; width of  $\pm 1$  cm; and for the form of a spear with a ride root system. Microscopic observations are found in the form of epidermal cells, exodermis, cortex, endodermis, bearing files, calcium oxalate crystals, and stone cells. The identification of chemical compounds showed positive results against alkaloids, flavonoids, saponins, and triterpenoids. The thin-layer chromatography profile shows four separate stains with eluent ethyl acetate : methanol : water in a ratio of 8 : 2 : 1, respectively.

Received: February 20<sup>th</sup> 2020<sup>13</sup>Accepted: April 25<sup>th</sup> 2020Published: May 21<sup>st</sup> 2020

© 2020 Fitriyanti, Yusmalina, Rahmi Muthia. Published by Institute for Research and Community Services Universitas Muhammadiyah Palangkaraya. This is an Open Access article under the CC-BY-SA License (<http://creativecommons.org/licenses/by-sa/4.0/>). DOI: <https://doi.org/10.33084/bjop.v3i2.1267>

**INTRODUCTION**

Indonesia is a country that has enormous biodiversity potential. Geographically, Indonesia has many types of plants that can be used traditionally as medicines for various diseases (von Rintelen *et al.*, 2017). One of them is the island of Borneo or also known as Kalimantan, which has the potential of traditional medicine knowledge by various tribes and is rich in useful plants (Khoo *et al.*, 2016).

Sangkareho (*Callicarpa longifolia* Lam.) is one of the native plants of Borneo which belongs to the genus *Callicarpa* (Novaryatiin *et al.*, 2018; Qamariah *et al.*, 2016). This plant contains a source of natural compounds and can be used as traditional medicines (Harley *et al.*, 2004). The *Callicarpa* genus is utilized by one of the indigenous

tribes of Kalimantan, the Dayak Tunjung tribe (Setyowati, 2010). *Callicarpa longifolia*, also called "karehau", is traditionally used as a treatment for cold symptoms and inflammation of the roots, while the leaves are useful as a wet powder with analgesic, anti-inflammatory, antimicrobe, and antioxidant activity (Handayani & Natasia, 2018; Erwin *et al.*, 2015).

Pharmacognostic studies are the first step in the standardization process of medicines derived from plants (Yuan *et al.*, 2016). This research helps identify the nature and characteristics of a plant material. Identification and quality assurance of an ingredient are important prerequisites for ensuring plant quality that will contribute to safety and efficacy (Castillo *et al.*, 2020; Ekor, 2013).

According to previous research it was revealed that the leaves of *C. longifolia* with 70% ethanol extract had several secondary metabolite compounds such as flavonoids, tannins, saponins, and terpenoids (Supomo *et al.*, 2016; Semiawan *et al.*, 2015). However, research on the content of chemical compounds from the roots of *C. longifolia* plants especially those originating from South Kalimantan has never been done before, so researchers are interested in examining the pharmacognostic study of *C. longifolia* by organoleptic, macroscopic, microscopic, identification of groups of chemical compounds, and thin-layer chromatography (TLC). This pharmacognostic study is expected to be able to assist in identifying the content of efficacious compounds especially those found in the roots of the *C. longifolia* plant.

## MATERIALS AND METHODS

### *Plant material*

*Callicarpa longifolia* plant was collected from Pelaihari, South Kalimantan in the month of January 2018. The plant was identified by Laboratory of Pharmacognosy, Faculty of Mathematics and Natural Sciences, Universitas Lambung Mangkurat.

### *Pharmacognostic study*

Coarse root powder of *C. longifolia* is used to study organoleptic, macroscopic, microscopic, phytochemical identification, and TLC profiles of *C. longifolia* ethanol extract (Supomo *et al.*, 2016; Wulandari, 2011; Hanani, 2014; Gandjar & Rohman, 2007; Puspawati *et al.*, 2013).

## RESULTS AND DISCUSSION

### *Organoleptic test*

*Callicarpa longifolia* root observed shape, color, taste, and odor based on five respondents' opinions. Organoleptic examination of fresh *C. longifolia* root color was light brown while the root simplicia was brown. Fresh roots

and simplicia of *C. longifolia* has a bitter and some bitter taste, the taste is suspected to have an alkaloid and saponin compound as according to Harbone (2006), alkaloids and saponins have a bitter or bitter taste. The smell of fresh roots and simplicia of *C. longifolia* has a distinctive odor that is a rather pungent odor.

### *Macroscopic characteristics*

Macroscopically, the fresh root of *C. longifolia* is the length around  $\pm 90$  cm; the width of the *C. longifolia* root is around  $\pm 1$  cm; and for the *C. longifolia* root form it has a spear shape (Tjitraoepomo, 2005) with a tapering system, as presented in Figure 1.



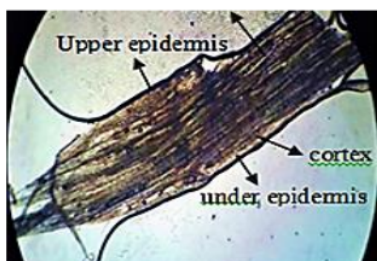
Figure 1. *Callicarpa longifolia* root

### *Microscopic characteristics*

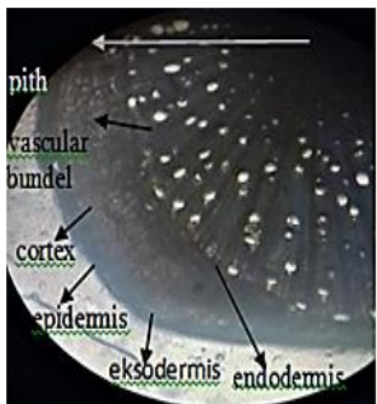
Based on microscopic anatomy at a  $10 \times 10$  magnification including epidermis, exodermis, cortex, endodermis, transport file, and pith, as can be observed in Figure 2. At a magnification of  $40 \times 10$  available stone cells and Ca oxalate crystal. In the anatomy of root powder with a magnification of  $10 \times 10$  fibers have the epidermis and exodermis are the outermost part of the root, the epidermis consists of a tightly arranged cell membrane, which does not have space between cells. The function of the epidermis is to protect the underlying tissue (Javelle *et al.*, 2011). Endodermis is the layer that separates the cortex with the central cylinder, the function of the endodermis is the part that is inserted by ground water

into the ship. The cortex is composed of several layers of cells, which are close to the epidermal layer (Palmgren, 2018).

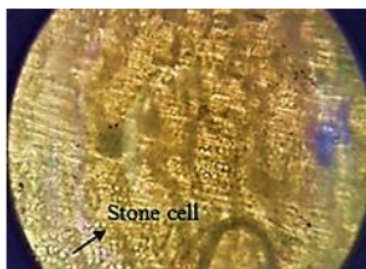
At the root of the transport beam system consists of xylem and phloem arranged alternately. The transportation file consists of xylem or a means of transportation used to transport food and nutrient extracts from the soil to the whole body of the plant, and phloem, which is a file that functions as a carrier of photosynthesis from the leaves to the entire body of the plant (Turner & Sieburth, 2003). Pith is located between transport vessels that are in the parenchymal tissue. The function of the pith itself is used to store nutrients for plants, travel nutrients in the stems, branches, leaves and roots of plants. Stone cells (sclereids) is a network of sclerenchyma cells that are relatively round with a thick cell wall, this network serves to strengthen the body of the plant (Whitehill *et al.*, 2016).



a



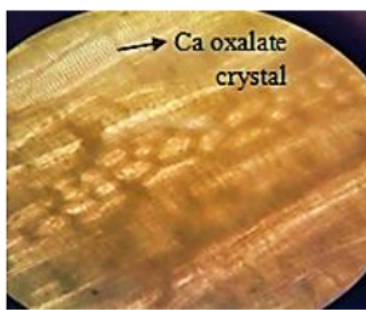
b



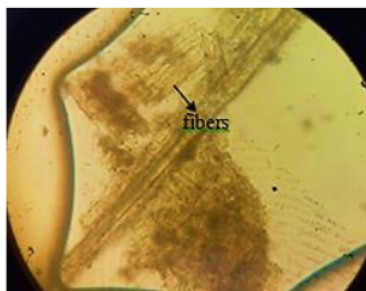
c

Figure 2. Microscopic fresh root of *C. longifolia* with magnitude of 10 x 10 (a) and 40 x 10 (b) with the appearance of a stone cell (c)

Calcium oxalate crystal as can be seen in Figure 3 is indicated by black dots (Toolakou *et al.*, 2016). The function of calcium oxalate crystal is as a protector for plants, because calcium oxalate can react allergically to animals that eat it. Fibers are sclerenkim tissue, consisting of cells that are elongated with thick and pointed-ended cell walls, which function as supporting tissues (Whitehill *et al.*, 2016).



a



b

Figure 3. Microscopic powder of *C. longifolia* root with magnitude of 10 x 10 with the appearance of Ca oxalate crystals (a) and fibers (b)

### Phytochemical screening

Phytochemical screening of *C. longifolia* roots showed positive results on the presence of alkaloid, flavonoid, saponin, and triterpenoid compounds. These results are in line with previous studies reported by Ardhanay *et al.* (2019) and Saputra (2016).

### Thin-layer chromatography profile

Thin-layer chromatography results using ethyl acetate : methanol : water (8 : 2 : 1) eluent provide good stain management and quite clearly separated. On observations using UV<sub>254</sub> nm obtained three stains with the Rf value of 0.72; 0.61; and 0.54. Observation using UV<sub>366</sub> nm appeared single white stain with Rf value of 0.54. Observation using H<sub>2</sub>SO<sub>4</sub> stain viewer which was then heated in an oven obtained four stains with Rf value of 0.14; 0.54; 0.61; and 0.72. From the results of TLC profiles obtained four spots that showed about samples using eluent ethyl acetate : methanol : water (8 : 2 : 1). For the value of Rf is in accordance with the range, while the value of Rf between 0.2- 0.8 (Gandjar & Rohman, 2007).

The Rf value can be made to prove in identifying the composition. If the value of Rf has the same value, then the composition can be claimed to have the same or similar characteristics. Meanwhile, if the Rf value is different from the complement that can be claimed to represent a different composition (Kartini *et al.*, 2020). Based on the description, seen from the TLC profile and Rf value of 70% ethanol extract of *C. longifolia* root with ethyl acetate eluent : methanol : water (8 : 2 : 1). The eluent optimization is good for improvement, but for development it can be done by increasing the polarity of the eluent mixture used (Zhang *et al.*, 2018). The TLC plate with multiple spotting views is presented in Figure 4, while a comparison of the Rf values obtained is presented in Table I.

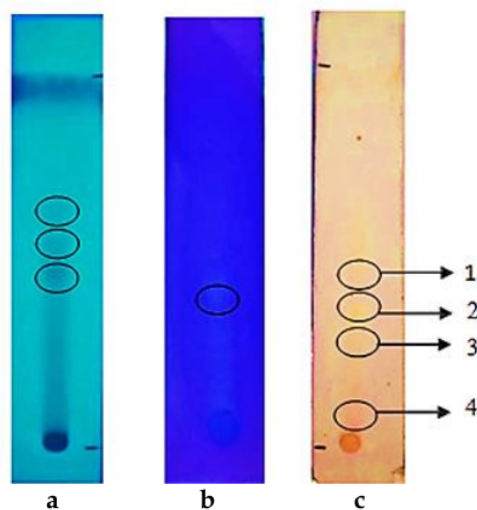


Figure 4. The TLC plate profile with UV<sub>254</sub> nm (a), UV<sub>366</sub> nm (b), and H<sub>2</sub>SO<sub>4</sub> (c) stain viewer

Table I. The Rf value of TLC results with ethyl acetate : methanol : water (8 : 2 : 1) eluent

Stain Viewer	Sp	Rf	Color
UV <sub>254</sub> nm	1	0.72	Dark blue
	2	0.61	Dark blue
	3	0.54	Dark blue
UV <sub>366</sub> nm H <sub>2</sub> SO <sub>4</sub>	1	0.45	White
	1	0.72	Red
	2	0.61	Yellow
	3	0.54	Dark Yellow
	4	0.14	Dark Yellow

### CONCLUSION

Characteristics of *C. longifolia* root there are several examinations consisting of organoleptic examination of *C. longifolia* root has a light brown root color, a bitter taste and a bit bland and a rather pungent characteristic odor. Macroscopic examination of *C. longifolia* root has a length of approximately ±90 cm; width of approximately ±1 cm; and for the shape of the roots of *C. longifolia* is a spear with a tapered root system. In microscopic examination of the identified fragments the cell forms are epidermis, exodermis, cortex, endodermis, transport beam, calcium oxalate crystal, and stone cells. From the results of identification of chemical compounds, the compounds contained in *C. longifolia* root are alkaloids, flavonoids,

saponins, and triterpenoids. The results of the TLC profile showed four stains on the plate using eluent ethyl acetate : methanol : water (8 : 2 : 1).

8

### ACKNOWLEDGMENT

The authors would like to thank Department of Pharmacy Sekolah Tinggi Ilmu Kesehatan Borneo Lestari for providing the support.

### REFERENCES

- Ardhany, S.D., Chusna, N., Utar, Z., Zakaria, Z., & Pascalo, B. (2019). Antidiarrheal activity of ethanolic extract of leaves of Sangkareho (*Callicarpa longifolia* Lam) from Central Kalimantan. *Letters in Applied NanoBioScience*, 8(4), 739-743. doi:10.33263/LIANBS84.739742
- Castillo, L., Baltodano, E., Ramirez, N., Vargas, R., & Hanley, G. (2020). Design of Experiments Assessment for the Determination of Moisture Content in Five Herbal Raw Materials Contained in Tea Products. *Borneo Journal of Pharmacy*, 3(1), 22-35. doi:10.33084/bjop.v3i1.1236
- Ekor, M. (2013). The growing use of herbal medicines: issues relating to adverse reactions and challenges in monitoring safety. *Frontiers in Pharmacology*, 4, 177. doi:10.3389/fphar.2013.00177
- Erwin, E., Nisa, R.A., & Daniel, D. (2015). Phytochemical Test, Toxicity and Antioxidant Activity Leaves Kerehau (*Callicarpa longifolia* Lam.) With DPPH Method. *Jurnal Akta Kimia Indonesia (Indonesia Chimica Acta)*, 8(1), 52-59. doi:10.20956/ica.v8i1.2481
- Gandjar, I.G. & Rohman, A. (2007). *Kimia Farmasi Analisis*. Yogyakarta, Indonesia: Pustaka Pelajar.
- Hanani, E. (2014). *Analisis Fitokimia*. Jakarta, Indonesia: Penerbit Buku Kedokteran EGC.
- Handayani, R. & Natasia, G. (2018). Uji Daya Hambat Ekstrak Etanol Daun Sangkareho (*Callicarpa longifolia* Lam.) terhadap *Escherichia coli*. *Jurnal Surya Medika (JSM)*, 3(2), 54-61. doi:10.33084/jsm.v3i2.98
- Harborne, J.B. (2006). *Metode Fitokimia, Penuntun cara modern menganalisis Tumbuhan*. Bandung, Indonesia: ITB Press.
- Harley, R.M., Atkins, S., Budantsev, A.L., Cantino, P.D., Conn, B.J., Grayer, R., de Kok, R., Krestovskaja, T., Morales, R., Paton, A.J., Ryding, O., Upson, & Labiatae, T. In: Kadereit, J.W., Ed. (2004). *Flowering Plants, Dicotyledons: Lamiales, except Acanthaceae, including Avicenniaceae, The Families and Genera of Vascular Plants*. New York, U.S.: Springer. doi:10.1007/978-3-642-18617-2
- Javelle, M., Vernoud, V., Rogowsky, P.M., & Ingram, G.C. (2011). Epidermis: the formation and functions of a fundamental plant tissue. *The New Phytologist*, 189(1), 17-39. doi:10.1111/j.1469-8137.2010.03514.x
- Kartini, K., Dewi, E.R., Achmad, F., Jayani, N.I.E., Hadiyat, M.A., & Avanti, C. (2020). Thin Layer Chromatography Fingerprinting and Clustering of *Orthosiphon stamineus* Benth. from Different Origins. *Pharmacognosy Journal*, 12(1), 79-87. doi:10.5530/pj.2020.12.13
- Khoo, H.E., Azlan, A., Kong, K.W., & Ismail, A. (2016). Phytochemicals and Medicinal Properties of Indigenous Tropical Fruits with Potential for Commercial Development. *Evidence-Based Complementary and Alternative Medicine*, 2016, 7591951. doi:10.1155/2016/7591951
- Novaryatiin, S., Sari, A. A., & Mulyani, E. (2018). Antibacterial Activity of Ethanolic Extract of Sangkareho (*Callicarpa longifolia* Lam.) against *Staphylococcus epidermidis*. *Borneo Journal of Pharmacy*, 1(2), 85-88. doi:10.33084/bjop.v1i2.427
- Palmgren, M. (2018). Plant epithelia: What is the role of the mortar in the wall? *PLoS Biology*, 16(12), 3000073. doi:10.1371/journal.pbio.3000073
- Puspawati, R., Adirestuti, P., & Menawati, R. (2013). Khasiat Umbi Bawang Dayak (*Eleutherine palmifolia* (L.) Merr.) Sebagai Herbal Antimikroba Kulit. *Kartika: Jurnal Imiah Farmasi*, 1(1), 31-37. doi:10.26874/kjif.v1i1.21
- Qamariah, N., Handayani, R., & Khadafi, A. (2016). Pemanfaatan Tumbuhan Sangkareho (*Callicarpa longifolia* Lam) Asal Kalimantan Tengah sebagai Obat Tradisional. *Jurnal Surya*

- Medika (JSM)*, 2(1), 14-22. doi:10.33084/jsm.v2i1.364
- von Rintelen, K., Arida, E., & Häuser, C. (2017). A review of biodiversity-related issues and challenges in megadiverse Indonesia and other Southeast Asian countries. *Research Ideas and Outcomes*, 3, 20860. doi:10.3897/rio.3.e20860
- Saputra, A.K. (2016). Uji Identifikasi Farmakognostik Tumbuhan Sangkareho (*Callicarpa longifolia* Lam.) asal Kalimantan Tengah. In: Pratama, M.R.F., Ed. (2016). *Prosiding Seminar Nasional Ilmu Kesehatan SNIK*. Palangka Raya, Indonesia: Universitas Muhammadiyah Palangkaraya.
- Semiawan, F., Ahmad, I., & Masruhim, M.A. (2015). Aktivitas Antiinflamasi Ekstrak Daun Kerehau (*Callicarpa longifolia* L.). *Jurnal Sains dan Kesehatan*, 1(1), 1-4. doi:10.25026/jsk.v1i1.7
- Setyowati, F.M. (2010). Etnofarmakologi Dan Pemakaian Tanaman Obat Suku Dayak Tunjung Di Kalimantan Timur. *Media Penelitian dan Pengembangan Kesehatan*, 20(3), 104-112.
- Supomo, Supriningrum, R., & Junaid, R. (2016). Karakterisasi Dan Skrining Fitokimia Daun Kerehau (*Callicarpa longifolia* Lam.). *Jurnal Kimia Mulawarman*, 13(2), 89-96.
- Tjitrosoepomo, G. (2005). *Morfologi Tumbuhan*. Yogyakarta, Indonesia: Gadjah Mada University Press.
- Toolakou, G., Giannopoulos, A., Nikolopoulos, D., Bresta, P., Dotsika, E., Orkoula, M.G., Kontoyannis, C.G., Fasseas, C., Liakopoulos, G., Klapa, M.I., & Karabourmiotis, G. (2016). Alarm Photosynthesis: Calcium Oxalate Crystals as an Internal CO<sub>2</sub> Source in Plants. *Plant Physiology*, 171(4), 2577-2585. doi:10.1104/pp.16.00111
- Turner, S. & Sieburth, L.E. (2003). Vascular Patterning. *The Arabidopsis Book*, 2, 0073. doi:10.1199/tab.0073
- Whitehill, J.G., Henderson, H., Schuetz, M., Skyba, O., Yuen, M.M., King, J., Samuels, A.L., Mansfield, S.D., & Bohlmann, J. (2016). Histology and cell wall biochemistry of stone cells in the physical defence of conifers against insects. *Plant, Cell & Environment*, 39(8), 1646-1661. doi:10.1111/pce.12654
- Wulandari, L. (2011). *Kromatografi Lapis Tipis*. Jember, Indonesia: Taman Kampus Presindo.
- Yuan, H., Ma, Q., Ye, L., & Piao, G. (2016). The Traditional Medicine and Modern Medicine from Natural Products. *Molecules*, 21(5), 559. doi:10.3390/molecules21050559
- Zhang, Q.W., Lin, L.G., & Ye, W.C. (2018). Techniques for extraction and isolation of natural products: a comprehensive review. *Chinese Medicine*, 13, 20. doi:10.1186/s13020-018-0177-x

# Pharmacognostic Study of Sangkareho Root (*Callicarpa longifolia* Lam.) from Pelaihari, South Kalimantan

## ORIGINALITY REPORT

14%

SIMILARITY INDEX

12%

INTERNET SOURCES

10%

PUBLICATIONS

4%

STUDENT PAPERS

## PRIMARY SOURCES

- |   |   |    |
|---|---|----|
| 1 | <a href="http://www.semanticscholar.org">www.semanticscholar.org</a><br>Internet Source   | 4% |
| 2 | <a href="http://repository.istn.ac.id">repository.istn.ac.id</a><br>Internet Source   | 2% |
| 3 | <a href="http://open.library.ubc.ca">open.library.ubc.ca</a><br>Internet Source   | 2% |
| 4 | Submitted to Federation University<br>Student Paper   | 1% |
| 5 | Ilil Maidatuz Zulfa, Fitria Dewi Yunitasari, Susanty Kartika Dewi. "Potential Drug-drug Interactions Analysis in Children Out-patients with Bronchopneumonia Medication Prescriptions", <i>Borneo Journal of Pharmacy</i> , 2020<br>Publication | 1% |
| 6 | Fitriyanti Fitriyanti, Muhammad Nur Rahman Hendrawan, Karunita Ika Astuti. "Antibacterial Activity Test of Ethanol Extract Pineapple ( <i>Ananas comosus</i> (L.) Merr.) Peel against   | 1% |



# Growth of *Propionibacterium acnes*", Borneo Journal of Pharmacy, 2019

Publication

7

Saurabh Nimesh. "The Role of Pharmacist in the Health Care System: Current Scenario in India", Borneo Journal of Pharmacy, 2020

Publication

1 %

8

Rahmi Muthia, Muhammad Hidayatullah, Rahmi Hidayati. "Phytochemical Screening and Antioxidant Activity of Ethanolic Extract of Cawat Hanoman Stem (*Bauhinia aculeata* L.) using DPPH Method", Borneo Journal of Pharmacy, 2020

Publication

1 %

9

Submitted to University of Huddersfield

Student Paper

1 %

10

Aristha Novyra Putri, Noor Laila, Dyera Forestryana. "Formula Optimization of *Annona muricata* Folium Ethanolic Extract of Anti Acne Gel Formulation using Factorial Design Method", Borneo Journal of Pharmacy, 2019

Publication

<1 %

11

Mohammad Rizki Fadhil Pratama, Suratno Suratno, Evi Mulyani. "Profile of Thin-Layer Chromatography and UV-Vis Spectrophotometry of Akar Kuning Stem

<1 %

# Extract (Arcangelisia flava)", Borneo Journal of Pharmacy, 2018

Publication

12

docobook.com

Internet Source

<1 %

13

Adryan Fristiohady, Wahyuni Wahyuni, Fadhliyah Malik, Muhammad Ilyas Yusuf et al. "Level of Cytokine Interleukin-6 and Interleukin 1- $\alpha$  on Infectious Rat Model Treated with Etlingera elatior (Jack) R.M. Smith Fruit Extract as Immunomodulator", Borneo Journal of Pharmacy, 2020

Publication

<1 %

Exclude quotes On

Exclude matches Off

Exclude bibliography On

# Pharmacognostic Study of Sangkareho Root (*Callicarpa longifolia* Lam.) from Pelaihari, South Kalimantan

---

GRADEMARK REPORT

---

FINAL GRADE

**/0**

GENERAL COMMENTS

**Instructor**

---

PAGE 1

---

PAGE 2

---

PAGE 3

---

PAGE 4

---

PAGE 5

---

PAGE 6

---